



700 CONSOLE

● CONSOLE DE PONT | BRIDGE OVERHANG BRACKET

CODE	DESCRIPTION	POIDS WEIGHT LBS	FINITION
700000	C49 - CONSOLE DE PONT 54" C49 - BRIDGE OVERHANG BRACKET	46.00	-



● PORTE BOULON | BOLT HOLDER

CODE	DESCRIPTION	POIDS WEIGHT LBS	FINITION
700010	C-49 PORTE BOULON C-49 BOLT HOLDER	1.20	-



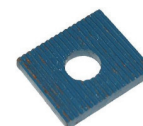
● BRAQUETTE MURALE | WALL BRACKET

CODE	DESCRIPTION	POIDS WEIGHT LBS	FINITION
700020	C51 - BRAQUETTE MURALE C51 - WALL BRACKET	1.30	-



● PLAQUE MURALE AJUSTABLE | WALL ADJUSTMENT PLATE

CODE	DESCRIPTION	POIDS WEIGHT LBS	FINITION
700030	C51 - PLAQUE MURALE AJUSTABLE C51 - WALL ADJUSTMENT PLATE	0.50	-



● RÉCEPTACLE POUR GARDE-CORPS | GUARD RAIL RECEPTACLE

CODE	DESCRIPTION	POIDS WEIGHT LBS	FINITION
700040	C52 - RÉCEPTACLE POUR GARDE-CORPS C52 - GUARD RAIL RECEPTACLE	1.20	-



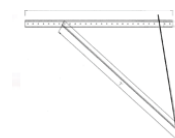
● EXTENSION | EXTENDER

CODE	DESCRIPTION	POIDS WEIGHT LBS	FINITION
700050	C54 - EXTENSION C54 - EXTENDER	3.50	-



● CONSOLE DE PONT | BRIDGE OVERHANG BRACKET

CODE	DESCRIPTION	POIDS WEIGHT LBS	FINITION
700060	CONSOLE DE PONT LÉGÈRE 7'-0" (84") 6000 LBS SWL BRIDGE OVERHANG BRACKET 7'-0" (84") SWL 6000 LBS	39.80	-



● CONSOLE DE PONT | BRIDGE OVERHANG BRACKET

CODE	DESCRIPTION	POIDS WEIGHT LBS	FINITION
700070	CONSOLE DE PONT HEAVY DUTY 8'-0" (96") 11000LBS SWL BRIDGE OVERHANG BRACKET HEAVY DUTY 8'-0" (96") 11000LBS SWL	45.00	-



● BOULON FILET | BOLT

CODE	DESCRIPTION	POIDS WEIGHT LBS	FINITION
700080	BOULON FILET 1/2" X 1-1/4" BOLT 1/2" X 1-1/4"	0.25	-
700090	BOULON FILET 1/2" X 3-1/2" BOLT 1/2" X 3-1/2"	0.25	-



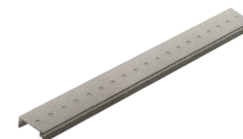
BARRE AJUSTABLE DIAGONALE | AJUSTABLE DIAGONAL BAR

CODE	DESCRIPTION	POIDS WEIGHT LBS	FINITION
700100	BARRE AJUSTABLE DIAGONALE POUR CONSOLE DE PONT (A/W) HEAVY 11K SWL AJUSTABLE DIAGONAL BAR FOR BRIDGE OVERHANG BRACKET (A/W) HEAVY 11K SWL	8.00	-



BARRE HORIZONTALE | HORIZONTAL BAR

CODE	DESCRIPTION	POIDS WEIGHT LBS	FINITION
700110	BARRE HORIZONTALE 8' POUR CONSOLE DE PONT (A/W) HEAVY 11K SWL - 1/2 HORIZONTAL BAR 8' FOR BRIDGE OVERHANG BRACKET (A/W) HEAVY 11K SWL - 1/2	12.00	-
700120	BARRE HORIZONTALE 8' POUR CONSOLE DE PONT LÉGÈRE - 1/2 HORIZONTAL BAR 8' FOR BRIDGE OVERHANG BRACKET - 1/2	10.00	-



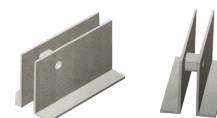
PARECHOC POUR CONSOLE DE PONT | BUMPER FOR BRIDGE OVERHANG BRACKET

CODE	DESCRIPTION	POIDS WEIGHT LBS	FINITION
700130	PARECHOC POUR CONSOLE DE PONT (A/W) HEAVY 11K SWL BUMPER FOR BRIDGE OVERHANG BRACKET (A/W) HEAVY 11K SWL	3.00	-



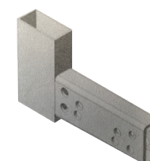
**PARECHOC PIVOTANT POUR CONSOLE DE PONT
BUMPER SWIVEL FOR BRIDGE OVERHANG BRACKET**

CODE	DESCRIPTION	POIDS WEIGHT LBS	FINITION
700140	PARECHOC PIVOTANT POUR CONSOLE DE PONT (A/W) HEAVY 11K SWL BUMPER SWIVEL FOR BRIDGE OVERHANG BRACKET (A/W) HEAVY 11K SWL	3.00	-



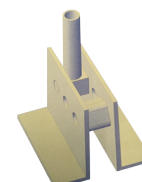
**RÉCEPTACLE DE GARDE-CORPS POUR CONSOLE DE PONT
GUARD RAIL FOR BRIDGE OVERHANG BRACKET**

CODE	DESCRIPTION	POIDS WEIGHT LBS	FINITION
700150	RÉCEPTACLE DE GARDE-CORPS POUR CONSOLE DE PONT (A/W) HEAVY 11K SWL GUARD RAIL FOR BRIDGE OVERHANG BRACKET (A/W) HEAVY 11K SWL	4.00	-



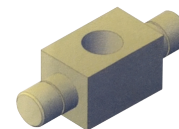
FIXATION BAR HORIZONTALE | HORIZONTAL BAR ATTACH

CODE	DESCRIPTION	POIDS WEIGHT LBS	FINITION
700160	FIXATION BAR HORIZONTALE HORIZONTAL BAR ATTACH	4.50	-



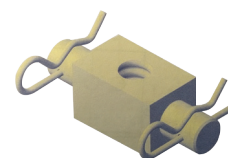
● RÉCEPTEUR DE TIGE FILLETÉE | RECEPTOR FOR COIL ROD

CODE	DESCRIPTION	POIDS WEIGHT LBS	FINITION
700170	RÉCEPTEUR DE TIGE FILLETÉE 1/2" POUR LA DIAGONAL RECEPTOR FOR COIL ROD DIAGONAL 1/2"	2.00	-



● RÉCEPTEUR DE COIL ROD | RECEPTOR FOR COIL ROD

CODE	DESCRIPTION	POIDS WEIGHT LBS	FINITION
700180	RÉCEPTEUR DE COIL ROD 3/4" POUR LA DIAGONAL (A/W) HEAVY RECEPTOR FOR COIL ROD HEAVY DIAGONAL 3/4"	2.00	-



● PLAQUE MURALE | WALL MOUNT BASE

CODE	DESCRIPTION	POIDS WEIGHT LBS	FINITION
700190	PLAQUE MURALE WALL MOUNT BASE	45.00	-

