



500 EURO SYSTÈME

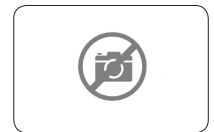
EURO CÔNE DE PLASTIQUE | EURO PLASTIC CONE

CODE	DESCRIPTION	POIDS WEIGHT LBS	FINITION
500000	EURO CÔNE DE PLASTIQUE 5/8 (15MM) EURO PLASTIC CONE 5/8	0.05	NOIR BLACK



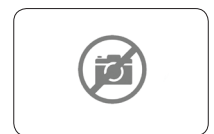
EURO CÔNE ACIER/PLASTIQUE | EURO STEEL / PLASTIC CONE

CODE	DESCRIPTION	POIDS WEIGHT LBS	FINITION
500010	EURO CÔNE ACIER/PLASTIQUE DW15 (5/8 X 4") 20000LBS SWL EURO STEEL / PLASTIC CONE DW15 (5/8 X 4")	1.15	-



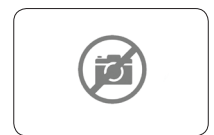
EURO CÔNE ACIER/PLASTIQUE PIVOTANT | EURO STEEL / PLASTIC SWIVEL CONE

CODE	DESCRIPTION	POIDS WEIGHT LBS	FINITION
500020	EURO CÔNE ACIER/PLASTIQUE PIVOTANT DW15 (5/8 X 4") 20000LBS SWL EURO STEEL / PLASTIC SWIVEL CONE (5/8 X 4")	1.15	-



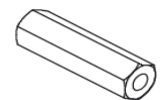
EURO FLANGE NUT WASHER | EURO FLANGE NUT WASHER

CODE	DESCRIPTION	POIDS WEIGHT LBS	FINITION
500030	EURO FLANGE NUT WASHER 15MM X 70MM (5/8" X 2,75") - 20K SWL (WL90KN) EURO FLANGE NUT WASHER 15MM X 70MM (5/8" X 2,75") - 20K SWL (WL90KN)	1.21	-

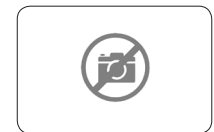


EURO HEX NUT | EURO HEX NUT

CODE	DESCRIPTION	POIDS WEIGHT LBS	FINITION
500070	EURO HEX NUT 15/17MM - 100MM EURO HEX NUT 15/17MM - 100MM	-	-



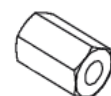
CODE	DESCRIPTION	POIDS WEIGHT LBS	FINITION
500080	EURO HEX NUT 15MM X 30MM (5/8" X 1,18") - 13,5K SWL (WL60KN) EURO HEX NUT 15MM X 30MM (5/8" X 1,18") - 13,5K SWL (WL60KN)	0.29	-



CODE	DESCRIPTION	POIDS WEIGHT LBS	FINITION
500090	EURO HEX NUT 15MM X 50MM 20000LBS NOIR (NOIR) EURO HEX NUT 15MM X 50MM 20000LBS NOIR (NOIR)	-	NOIR BLACK



CODE	DESCRIPTION	POIDS WEIGHT LBS	FINITION
500100	EURO HEX NUT 15MM X 50MM 20000LBS (HDC) EURO HEX NUT 15MM X 50MM 20000LBS (HDC)	-	GALV. HDC



EURO HEX ANCHOR NUT | EURO HEX ANCHOR NUT

CODE	DESCRIPTION	POIDS WEIGHT LBS	FINITION
500110	EURO HEX ANCHOR NUT 32MM X 45MM EURO HEX ANCHOR NUT 32MM X 45MM	0.46	NOIR BLACK



EURO CAM NUT | EURO CAM NUT

CODE	DESCRIPTION	POIDS WEIGHT LBS	FINITION
500120	EURO CAM NUT DW15 EURO CAM NUT DW15	0.70	NOIR BLACK



EURO WING NUT | EURO WING NUT

CODE	DESCRIPTION	POIDS WEIGHT LBS	FINITION
500230	EURO WING NUT 15 MM (5/8") EURO WING NUT 15 MM (5/8")	0.97	GALV. HDG



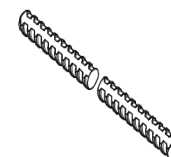
EURO SWIVEL WING NUT WITH PLATE | EURO PLASTIC CONE

CODE	DESCRIPTION	POIDS WEIGHT LBS	FINITION
500140	EURO SWIVEL WING NUT WITH PLATE (DOME NUT) 15MM (5/8") - 20000LBS SWL EURO SWIVEL WING NUT WITH PLATE (DOME NUT) 15MM (5/8") - 20000LBS SWL	-	-



EURO BAR | EURO BAR

CODE	DESCRIPTION	POIDS WEIGHT LBS	FINITION
500160	EURO BAR DYWIDAG 15MM (5/8") X 20'	-	-
500170	EURO BAR DYWIDAG 20MM X 20'	-	-



VIS D'AJUSTEMENT FEMELLE | SHE BOLT

CODE	DESCRIPTION	POIDS WEIGHT LBS	FINITION
500180	VIS D'AJUSTEMENT FEMELLE DW SHE BOLT	2.18	-



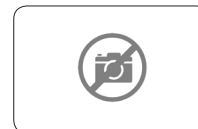
V-TIE HOLDER

CODE	DESCRIPTION	POIDS WEIGHT LBS	FINITION
500190	V-TIE HOLDER 15MM (5/8") - INCLINAISON 45DEG.	-	-



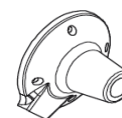
PLAQUE D'ANCRAGE | ANCHOR PLATE

CODE	DESCRIPTION	POIDS WEIGHT LBS	FINITION
500200	PLAQUE D'ANCRAGE DW15 ANCHOR PLATE DW15	-	-



PLAQUE D'ANCRAGE | ANCHOR PLATE

CODE	DESCRIPTION	POIDS WEIGHT LBS	FINITION
500210	PLAQUE D'ANCRAGE DW20 ANCHOR PLATE DW20	1.76	-



EURO WING NUT HDG | EURO WING NUT HDG

CODE	DESCRIPTION	POIDS WEIGHT LBS	FINITION
500230	EURO WING NUT 20 MM HDG EURO WING NUT 20 MM HDG	-	GALV. HDG

